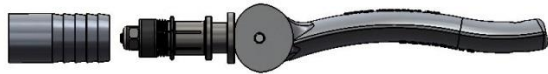


# 80/81 SERIES OPERATING INSTRUCTIONS

## Operating Instructions:

1. Insert connector onto test piece. Make sure a minimum of .730" of engagement is achieved. This will ensure proper seal life and gripping ability.



2. Cam the handle 90°.



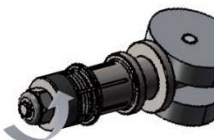
3. After your test is completed vent the system then remove connector.

## Adjustment:

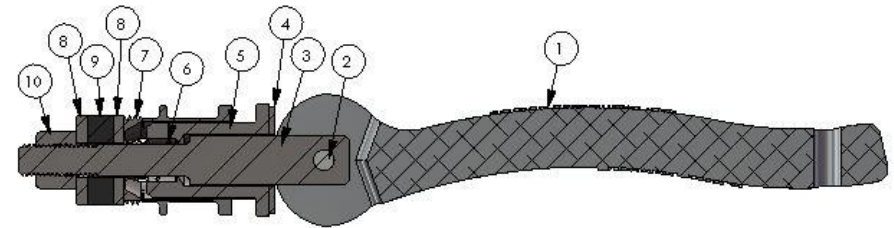
1. If the RAMSEAL® connector is not sealing properly some adjustment may be needed.
2. Clockwise to tighten



3. Counterclockwise to loosen.



## Replacement Parts and Assembly Diagram:



ITEM NO.	MODEL 80	MODEL 81	DESCRIPTION
1	8002	8102	Handle
2	8003	8103	Handle Pin
3	N/A	8112	Wear Washer
4	8001	8101	Shaft
5	8005*	8105*	Head
6	8007	8107	Spring
7	8006*	8106*	Collet
8	8015*	8115*	Seal Stop
9	8008*	8108*	Seal
10	8017	8117	Seal Stop Nut

\*Specify Model Number, and /or Tube I.D. and O.D.