

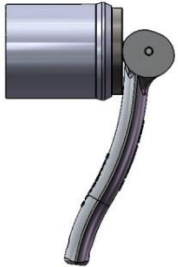
# 70 SERIES OPERATING INSTRUCTIONS

## Operating Instructions:

1. Insert connector into test piece. Make sure a minimum of 1.200 of engagement is achieved. This will ensure proper seal life and gripping ability.



2. Cam the handle 90°.



3. After your test is completed vent the system then remove the connector.

## Adjustment:

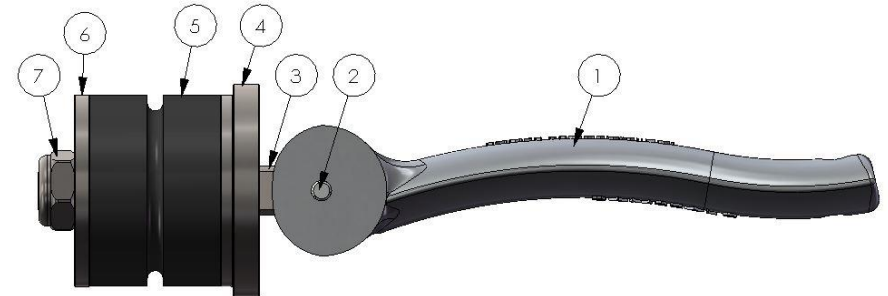
1. If the RAMSEAL® connector is not sealing properly a 9/16" wrench may be used to make some adjustments.
2. Clockwise to tighten



3. Counterclockwise to loosen.



## Replacement Parts and Assembly Diagram:



ITEM NO.	PART NO.	DESCRIPTION
1	7002	Handle
2	7003	Handle Pin
3	7001	Shaft
4	7005-*	Head Washer
5	7008-*	Seal
6	7012-*	Bottom Washer
7	7017	Seal Stop Nut

\* Specify Model Number, and /or Tube I.D. and O.D.