

131-132 SERIES OPERATING INSTRUCTIONS

Operating Instructions:

1. Insert connector onto test piece. Make sure a minimum of .360" of engagement is achieved. This will ensure proper seal life and gripping ability.



2. Cam the handle 90°.



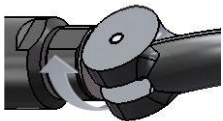
3. After your test is completed vent the system then remove connector.

Adjustment:

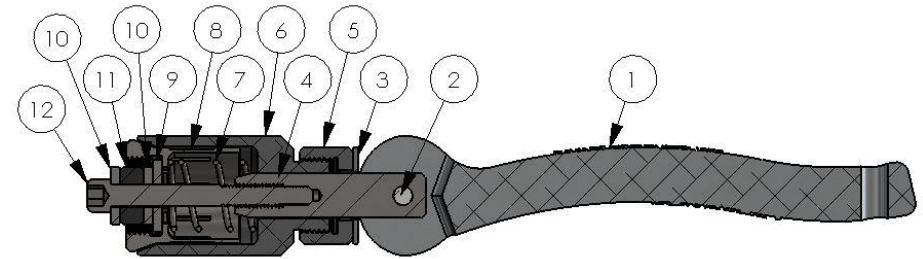
1. If the RAMSEAL® connector is not sealing properly some adjustment may be needed.
2. The adjusting nut and body are set using Loctite® from the factory. Uses a 3/4" wrench to break the Loctite® loose.
3. Counterclockwise to tighten



4. Clockwise to loosen.



Replacement Parts and Assembly Diagram:



ITEM NO.	MODEL 131	MODEL 132	DESCRIPTION
1	13102	13202	Handle
2	13103	13203	Handle Pin
3	13112	13212	Wear Washer
4	13128	13228	Shaft
5	13131	13231	Adjusting Nut
6	13101	13201	Body
7	13107	13207	Spring
8	13106-*	13206-*	Collet
9	13115-*	13215-*	Tube Stop
10	13115-*	13215-*	Seal Stop
11	13108-*	13208-*	Seal
12	13117	13217	Seal Screw

*Specify Model Number, and /or Tube I.D. and O.D.